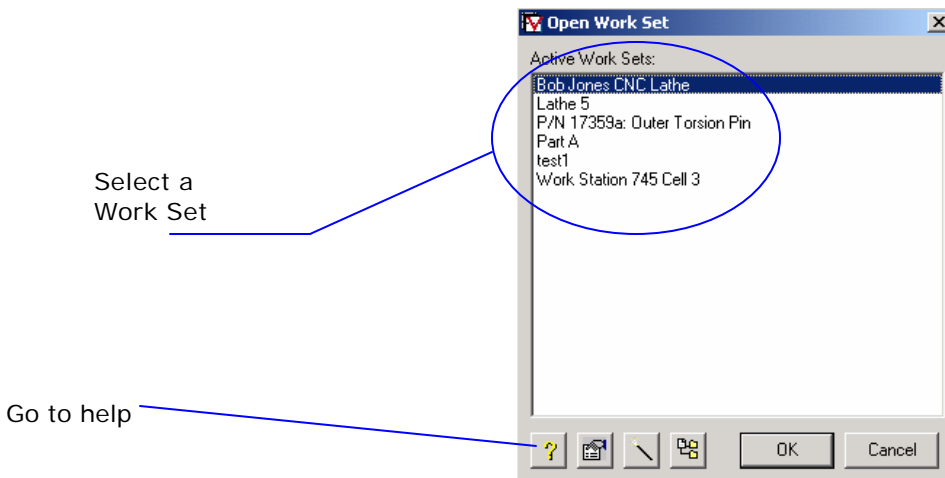


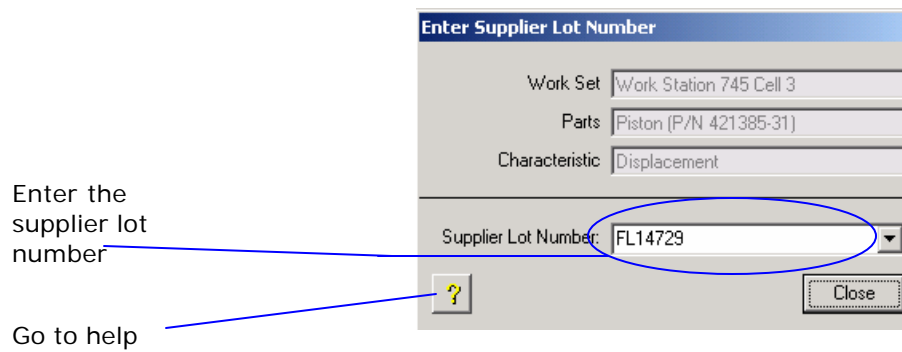
1) Log In



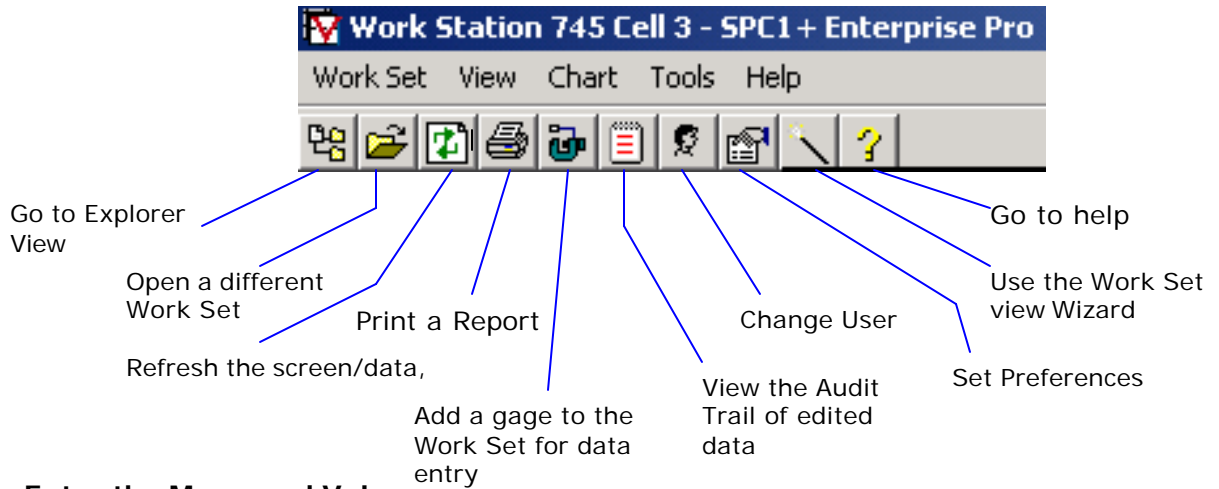
2) Select a Work Set



3) Enter any traceability values that you may be prompted for.



4) Make use of any available toolbar items. Left to right:



5) Enter the Measured Value

- use Gage button, gage send button, footswitch, F12 on keyboard, or type in value and press Enter on the keyboard.
- Enter traceability values
- Select "+" button to enter a new reading. Select the left/right arrows (VCR buttons) to scroll the subgroups.

